



E & A CONSULTING GROUP, INC.

Engineering Answers

10909 Mill Valley Road, Suite 100 • Omaha, NE 68154-3950
P 402.895.4700 • F 402.895.3599
www.eacg.com

Dear Homeowner:

The SID has contracted concrete work to be done on the streets in your SID. A contractor will be on site to do work which includes removing the existing concrete that is damaged and replacing it with new pavement.

Throughout the course of this project, there could be some minimal damage done to yards and or sprinkler systems. The contractor that is on site will be responsible for replacing any damaged sprinkler lines and/or heads. They will also be replacing any sod that is torn up while on site. Once the new sod is laid, it will be the responsibility of the homeowner at each lot to water the new sod until it has re-established itself.

Before starting the work on site, each contractor must put in a call and have all the utilities in the area located. You might notice some areas in your yard that have been flagged and/or spray painted. This does not indicate the area in which they will be working. It is just to give them an idea of what kind of utilities are in the area that could possibly be hit while the contractor is on site working.

All work that is completed in public Right-of-Way and follow City of Omaha and Sarpy County specifications.

The work in your SID should not take longer than 30 days to complete. Please let me know if you have any questions or concerns on this at all.

Thank You,

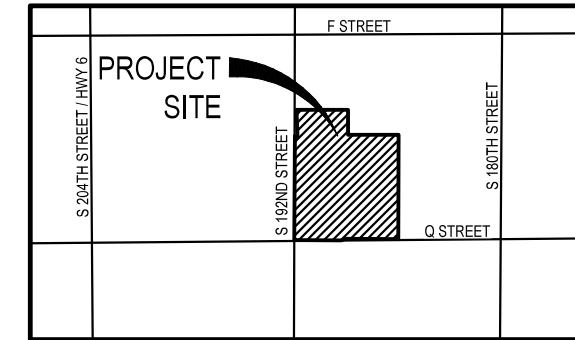
Chris Anderson
Construction Administration Tech.
Engineering Answers...by transforming concepts into reality
E & A Consulting Group, Inc.
10909 Mill Valley Road, Suite 100 • Omaha, NE 68154
402.895.4700 (o)
eacg.com



CATTAIL CREEK

2024 STREET RECONSTRUCTION

SID NO. 466
DOUGLAS COUNTY, NEBRASKA



VICINITY MAP

APPROXIMATE BID QUANTITIES

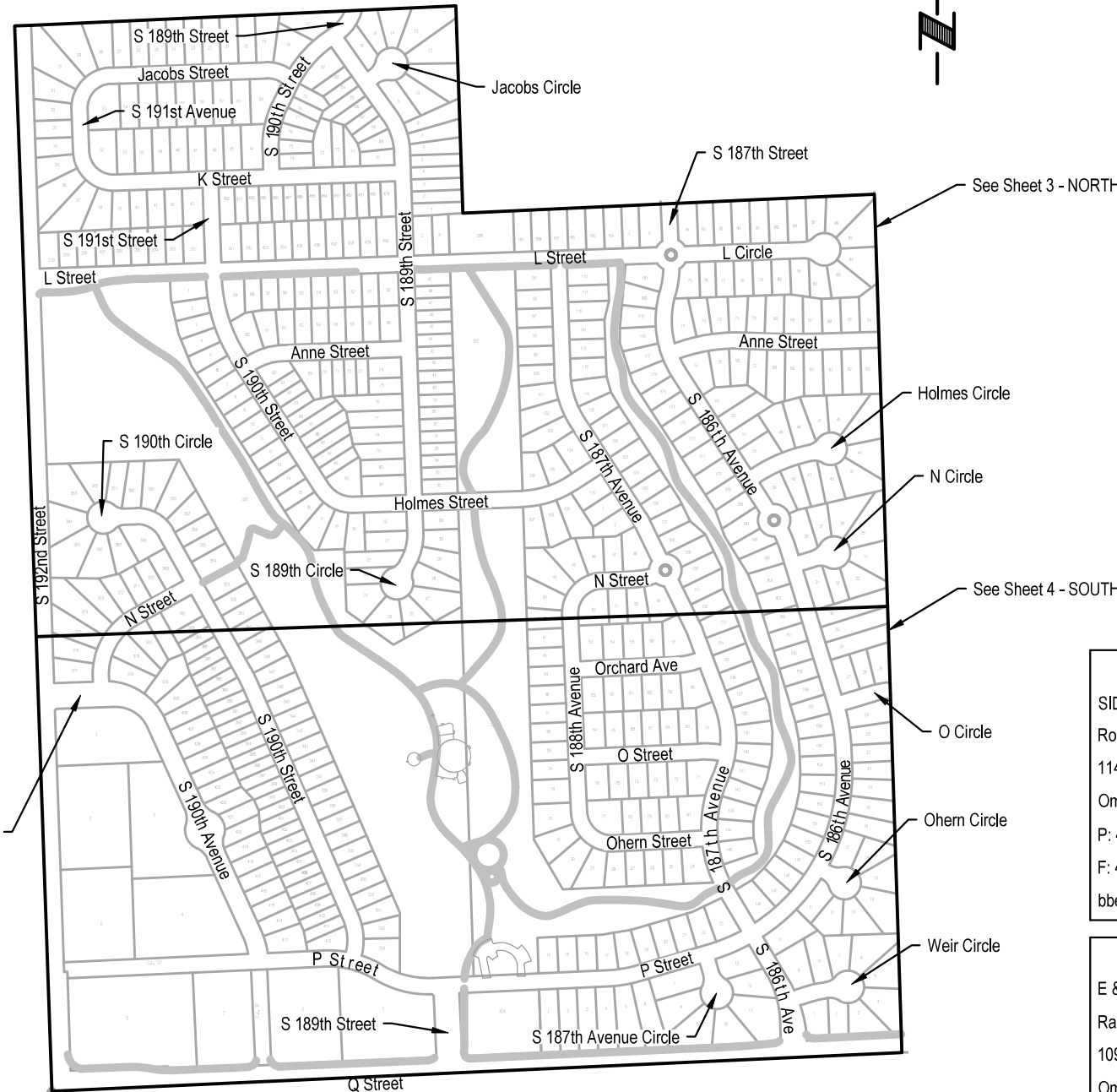
ITEM	DESCRIPTION	QUANTITY	UNIT
1	CONCRETE PAVEMENT REPAIR, LARGE AREA	342	SY
2	CONCRETE PAVEMENT REPAIR, SMALL AREA	202	SY
3	FULL DEPTH SAW CUT EXISTING PAVEMENT	1,005	LF
4	ADJUST WATER VALVE TO GRADE	1	EA
5	ADJUST MANHOLE TO GRADE	1	EA
6	REMOVE AND REPLACE 6" PCC MULTI-USE TRAIL	1,364	SF
7	REMOVE AND REPLACE 6" PCC PAVEMENT	227	SY
8	REMOVE MULTI-USE TRAIL	20	SY
9	REMOVE PCC SIDEWALK	244	SF
10	REMOVE PCC CURB RAMP	177	SF
11	CONSTRUCT 6" PCC MULTI-USE TRAIL	160	SF
12	CONSTRUCT PCC SIDEWALK	338	SF
13	CONSTRUCT PCC CURB RAMP	149	SF
14	CONSTRUCT IMPRINTED PCC SURFACE	56	SF
15	CONSTRUCT DETECTABLE WARNING PANEL (4 locations)	40	SF
16	REMOVE AND REPLACE FAULTY SUBGRADE	25	TN
17	ADJUST SPRINKLER (AS NEEDED)	3	EA
18	PERFORM DIAMOND GRINDING (2 locations)	25	SY

NOTE TO BIDDERS

- All project procedures, materials, bonds and reserves shall conform to the City of Omaha's Standard Specifications for Public Works Construction, 2024 Edition ("Standard Specifications"). It is the responsibility of the CONTRACTOR to be familiar with the contents of the Standard Specifications. The Standard Specifications can be found at: <https://publicworks.cityofomaha.org/contractors-consultants2/contractors/standard-plates-curb-ramps-and-specifications>
- References to "Standard Plates" refers to the City of Omaha's 2024 Standard Plate list. These Standard Plates can be found at: <https://publicworks.cityofomaha.org/2024-standard-plate>

The CONTRACTOR is referred to the following Standard Plates for use on this project:

PLATE NO.	DESCRIPTION	REVISION DATE
1002-02-1, 3, 4	Pavement Repair	02/13/2024
504-01-1	Concrete Curb Ramp	02/13/2024



INDEX OF SHEETS

SHEET NO.	DESCRIPTION
1	COVER
2	DETAIL
3	NORTH
4	SOUTH
5	TOTAL QUANTITIES
6	COMPOSITE MAP



APPLICANT

SID # 466
Robert Sterken, Chairman
11440 West Center Road, Ste. C
Omaha, NE 68114
P: 402.334.0700
F: 402.334.0815
bbeller@fdjlaw.com

DESIGNER

E & A Consulting Group, Inc
Teresa Wooten, P.E.
10909 Mill Valley Road, Suite 100
Omaha, NE 68154
P: 402.895.4700
F: 402.895.3599
twooten@eacg.com

INSPECTOR

E & A Consulting Group, Inc
Randall L. Pierce, P.E.
10909 Mill Valley Road, Suite 100
Omaha, NE 68154
P: 402.895.4700
F: 402.895.3599
rpierce@eacg.com

CONTRACTOR

E & A CONSULTING GROUP, INC.
Engineering • Planning • Environmental & Field Services
10909 Mill Valley Road, Suite 100 • Omaha, NE 68154
Phone: 402.895.4700 • Fax: 402.895.3599
www.eacg.com
State of NE Certificate of Authorization MC40008

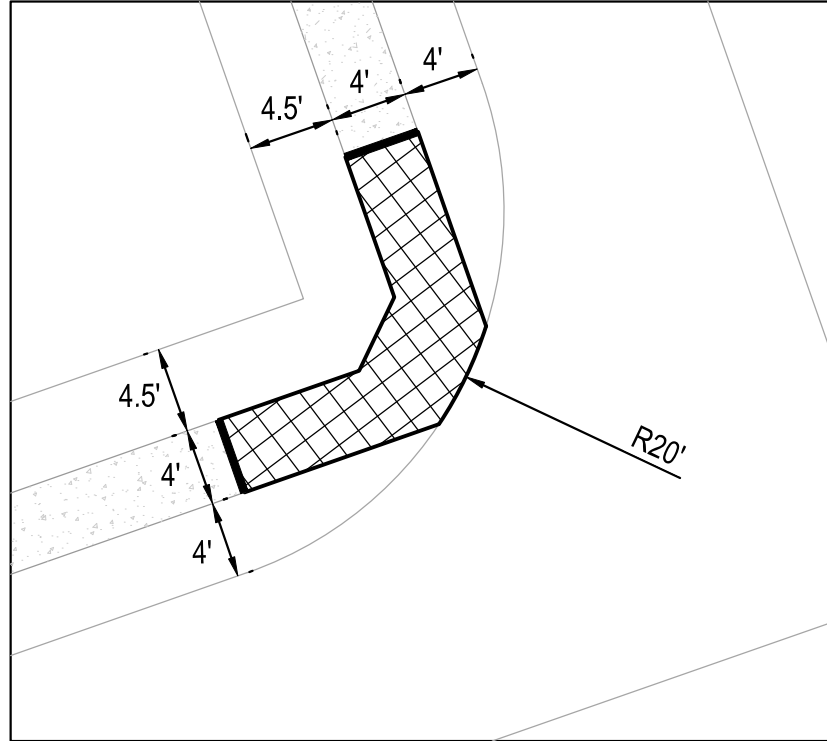


CATTAIL CREEK
2024 STREET
RECONSTRUCTION
SID 466
DOUGLAS COUNTY, NEBRASKA



COVER

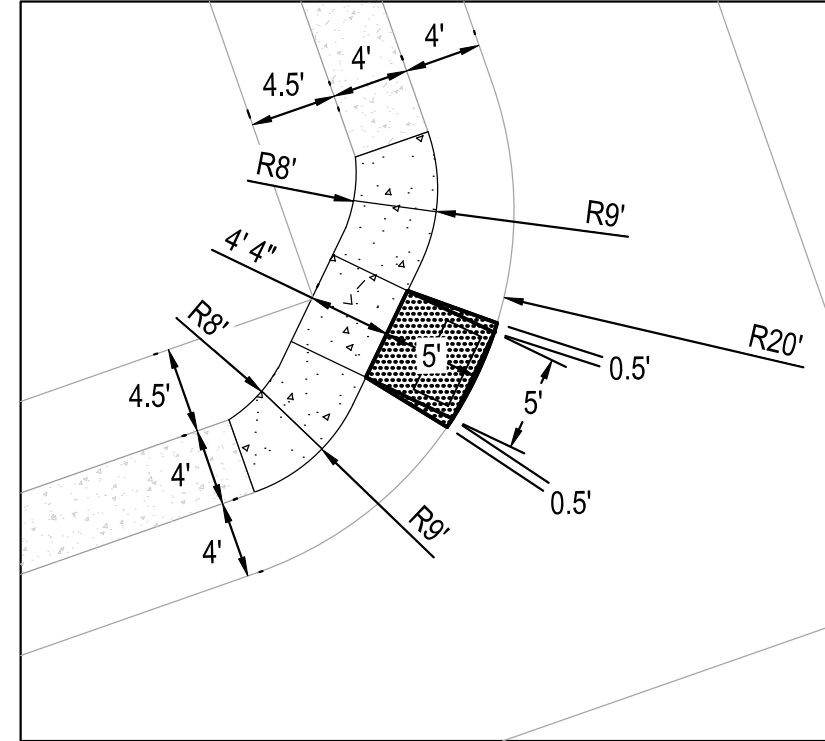
Revisions	Date	Description
1	5/7/2024	TAM
2		JME

Proj No: P1999/027/466
Date: 5/7/2024
Designed By: TAM
Drawn By: JME
Scale: 1" = 500'
Sheet: 1 of 6


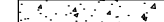


TYPICAL
CURB RAMP AND SIDEWALK REMOVAL
 SCALE 1" = 10'

-  CONCRETE REMOVAL PER LOCATION = ± 99 FT²
-  FULL DEPTH SAWCUT PER LOCATION = 8 L.F.



TYPICAL
CURB RAMP AND SIDEWALK CONSTRUCTION
 SCALE 1" = 10'

-  CONSTRUCT CURB RAMP PER LOCATION = ± 30 FT²
-  CONSTRUCT SIDEWALK PER LOCATION = ± 80 FT²



Revisions	Date	Description
1	5/7/2024	

Proj No: P1999/027/048
 Date: 5/7/2024
 Designed By: TMM
 Drawn By: JMB
 Scale: 1" = 10'
 Sheet: 2 of 6

DETAIL

CATTAIL CREEK
 2024 STREET
 RECONSTRUCTION
 SID 466
 DOUGLAS COUNTY, NEBRASKA



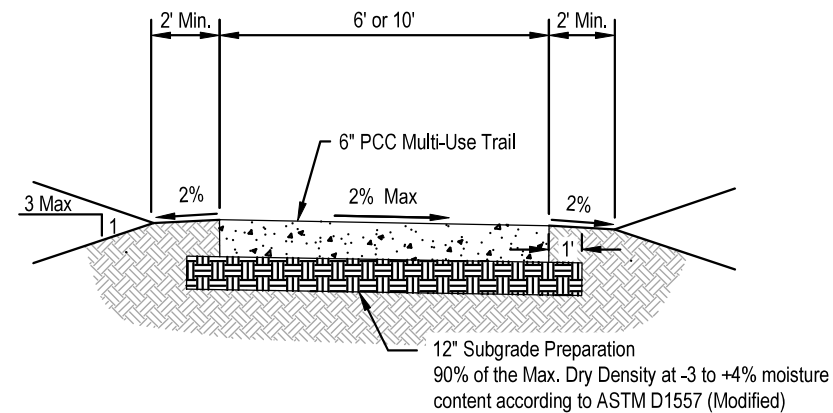
E & A CONSULTING GROUP, INC.
 Engineering • Planning • Environmental & Field Services

10809 Mill Valley Road, Suite 100 • Omaha, NE 68154
 Phone: 402.265.4700 • Fax: 402.265.2599
 www.eaeg.com
 State of NE Certificate of Authorization MC40008

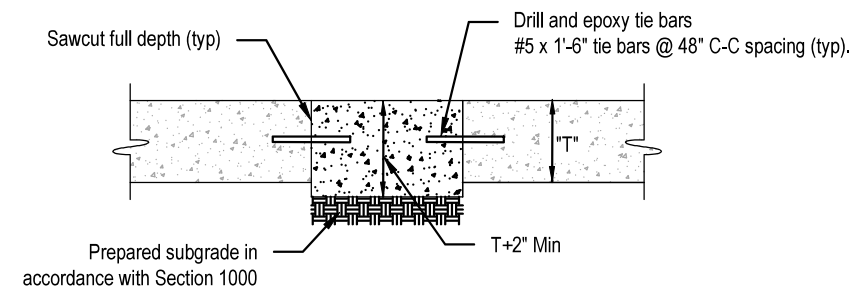


LEGEND

Trail



**TYPICAL TRAIL SECTION
NOT TO SCALE**



**SMALL AREA CONCRETE PAVEMENT REPAIR DETAIL
NOT TO SCALE**

2024 STREET RECONSTRUCTION									
AREA NO.	NO. POURS	SAW CUT L.F.	CURB L.F.	WIDTH	X	LENGTH	LARGE AREA EST S.Y.	SMALL AREA EST S.Y	NOTES
1	2	73	38	25.0	x	35.0	97.2		
2	1	50	25	12.5	x	25.0		34.7	
3	2	50	20	25.0	x	10.0		27.8	
4	1	51	26	12.5	x	26.0		36.1	
8	1	73	103	25.0	x	88.0	244.4		
9	1	69	43	12.5	x	43.0		59.7	

2024 STREET RECONSTRUCTION					
AREA NO.	TYPE	APPROX. DIMEN.	EST S.F.	NOTES	
A	Curb Ramp	4.5 x 6.0	27.0	REMOVE	
	Curb Ramp	6.5 x 6.0	39.0	CONSTRUCT, ADA Plate - Cast Iron, Adjust Sprinkler	
B	Sidewalk	4.0 x 20.0	80.0	REMOVE	
	Sidewalk	5.0 x 20.0	100.0	CONSTRUCT	
C	6" Trail	10.0 x 10.0	100.0	REMOVE	
	6" Trail	10.0 x 11.0	110.0	CONSTRUCT 10' WIDE TRAIL, Adjust Manhole	
V	6" Trail	6.0 x 6.0	36.0	REMOVE AND REPLACE 6' WIDE TRAIL, Adjust Sprinkler	

2024 STREET RECONSTRUCTION - DIAMOND GRINDING				
AREA NO.	TYPE	APPROX. DIMEN.	EST S.Y.	NOTES
10	Diamond Grinding	3 x 25	8.3	
11	Diamond Grinding	3 x 50	16.7	



E & A CONSULTING GROUP, INC.
Engineering • Planning • Environmental & Field Services

E & A CONSULTING GROUP, INC.
Engineering Answers

**CATTAL CREEK
2024 STREET
RECONSTRUCTION**
SID 466
DOUGLAS COUNTY, NEBRASKA

NORTH

5/7/2024 3:48 PM

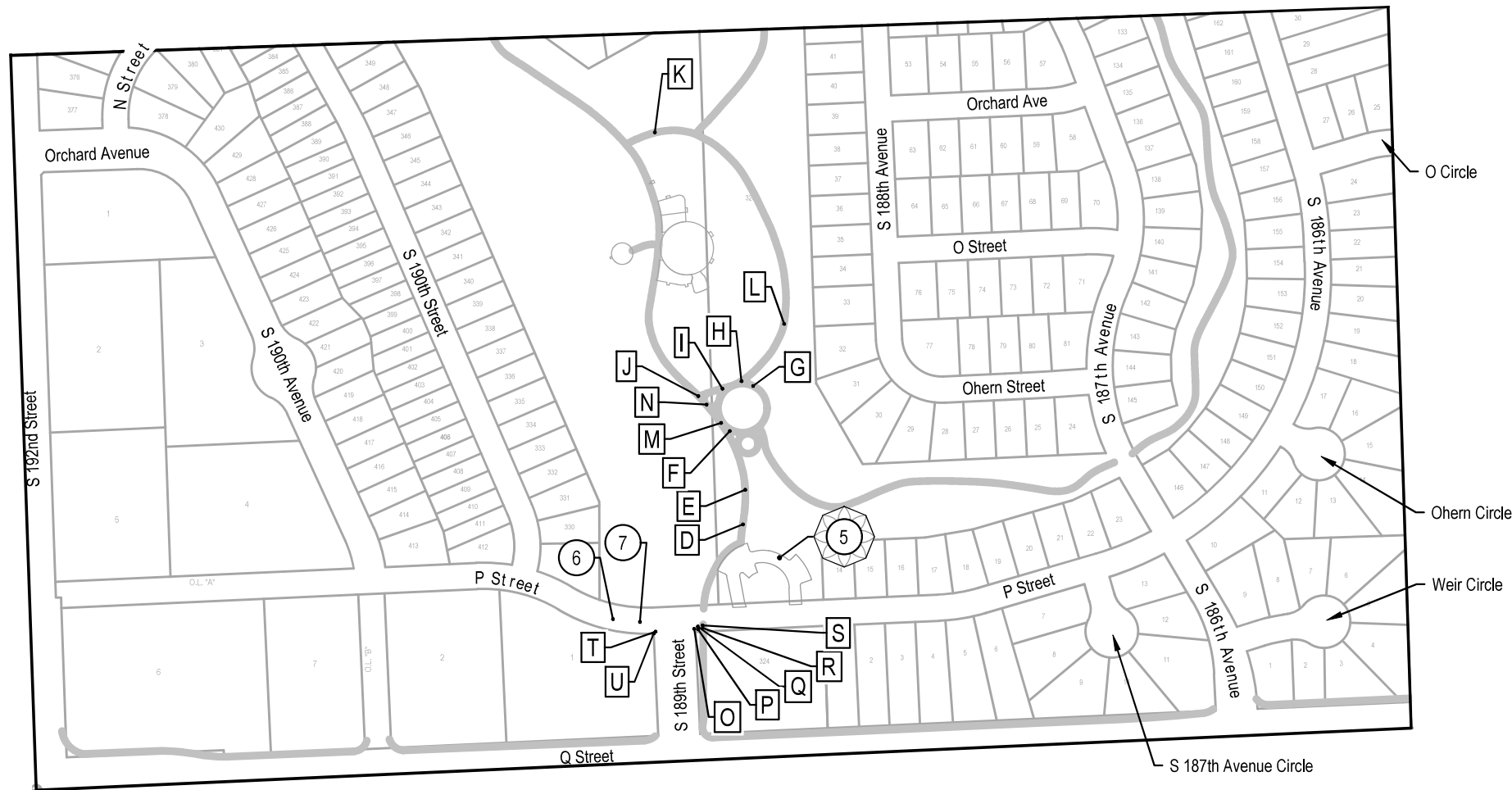
K:\Projects\1999\027\p48\Engineering\CAD Files\Paving\Cattal Creek 2024 Street Reconstruction-000.dwg

Jessica Brown

10809 Mill Valley Road, Suite 100 • Omaha, NE 68154
Phone: 402.265.4700 • Fax: 402.265.2599
www.eacg.com
State of NE Certificate of Authorization MC40008

LEGEND

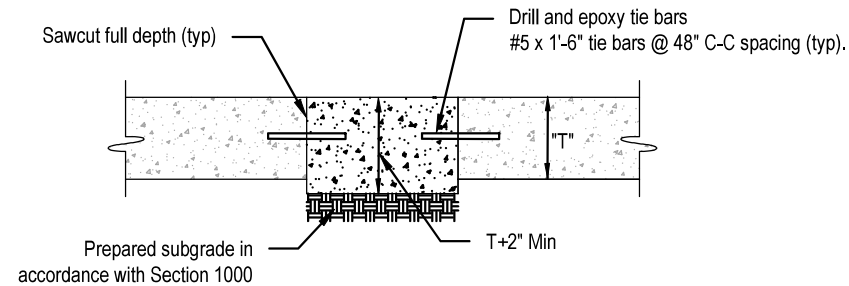
— Trail



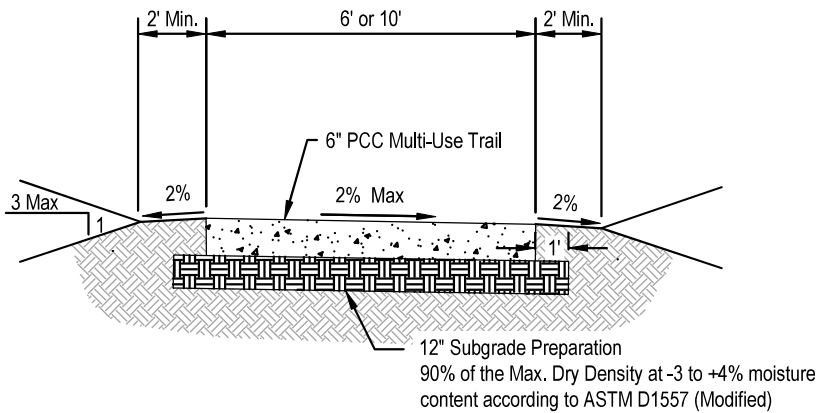
2024 STREET RECONSTRUCTION									
AREA NO.	NO. POURS	SAW CUT L.F.	CURB L.F.	WIDTH	X	LENGTH	LARGE AREA EST S.Y.	SMALL AREA EST S.Y.	NOTES
6	1	10	2	5.0	x	10.0		5.6	Curb Inlet Throat
7	1	57	12	12.5	x	20.0		27.8	
			57	10.0	x	9.0		10.0	

2024 STREET RECONSTRUCTION						
AREA NO.	TYPE	APPROX. DIMEN.	EST S.F.	NOTES		
D	6" Trail	10.0 x 20.0	200.0	REMOVE & REPLACE 10' WIDE TRAIL		
E	6" Trail	10.0 x 20.0	200.0	REMOVE & REPLACE 10' WIDE TRAIL		
F	6" Trail	13.0 x 8.0	104.0	REMOVE & REPLACE VARIED WIDTH TRAIL		
G	6" Trail	6.0 x 6.0	36.0	REMOVE & REPLACE 6' WIDE TRAIL		
H	6" Trail	6.0 x 6.0	36.0	REMOVE & REPLACE 6' WIDE TRAIL		
I	6" Trail	6.0 x 6.0	36.0	REMOVE & REPLACE 6' WIDE TRAIL		
J	6" Trail	10.0 x 20.0	200.0	REMOVE & REPLACE 10' WIDE TRAIL		
K	6" Trail	18.0 x 6.0	108.0	REMOVE & REPLACE 6' WIDE TRAIL		
L	6" Trail	18.0 x 6.0	108.0	REMOVE & REPLACE 6' WIDE TRAIL		
M	6" Trail	10.0 x 20.0	200.0	REMOVE & REPLACE 10' WIDE TRAIL		
N	6" Trail	10.0 x 10.0	100.0	REMOVE & REPLACE 10' WIDE TRAIL		
O	Curb Ramp	5.0 x 5.5	27.5	REMOVE		
	Curb Ramp	5.0 x 5.5	27.5	CONSTRUCT, ADA Plate - Cast Iron		
P	Sidewalk	4.0 x 25.0	100.0	REMOVE		
	Sidewalk	5.0 x 25.0	125.0	CONSTRUCT		
Q	Imprinted Surface	5.0 x 11.3	56.3	CONSTRUCT		
R	6" Trail	6.5 x 12.5	81.3	REMOVE		
	6" Trail	5.0 x 10.0	50.0	CONSTRUCT 10' WIDE TRAIL		
S	Curb Ramp	4.0 x 16.3	65.0	REMOVE		
	Curb Ramp	5.0 x 11.0	55.0	CONSTRUCT, (2' x 8') ADA Plate - Cast Iron		
T	Curb Ramp	5.8 x 10.0	57.5	REMOVE		
	Curb Ramp	5.0 x 5.5	27.5	CONSTRUCT, ADA Plate - Cast Iron, Adjust Water Valve		
U	Sidewalk	4.0 x 16.0	64.0	REMOVE		
	Sidewalk	4.5 x 25.0	112.5	CONSTRUCT, Adjust Sprinkler		

2024 STREET RECONSTRUCTION - PARKING LOT				
AREA NO.	TYPE	APPROX. DIMEN.	EST S.Y.	NOTES
5	6" P.C.C. PAVEMENT (OPW 3500/OPW 4000)	11 x 186	227.3	North & East Side of Parking Lot Drive Lane



SMALL AREA CONCRETE PAVEMENT REPAIR DETAIL
 NOT TO SCALE



TYPICAL TRAIL SECTION
 NOT TO SCALE



Revisions	Date	Description
1	5/7/2024	ISSUED FOR PERMITS

Proj No: P1999/027/048
 Date: 5/7/2024
 Designed By: TAMM
 Drawn By: JMB
 Scale: 1" = 300'
 Sheet: 4 of 6





2024 STREET RECONSTRUCTION									
AREA NO.	NO. POURS	SAW CUT L.F.	CURB L.F.	WIDTH	X	LENGTH	LARGE AREA EST S.Y.	SMALL AREA EST S.Y.	NOTES
1	2	73	38	25.0	x	35.0	97.2		
2	1	50	25	12.5	x	25.0		34.7	
3	2	50	20	25.0	x	10.0		27.8	
4	1	51	26	12.5	x	26.0		36.1	
6	1	10	2	5.0	x	10.0		5.6	Curb Inlet Throat
7	1	57	12	12.5	x	20.0		27.8	
			57	10.0	x	9.0		10.0	
8	1	73	103	25.0	x	88.0	244.4		
9	1	69	43	12.5	x	43.0		59.7	

2024 STREET RECONSTRUCTION - PARKING LOT					
AREA NO.	TYPE	APPROX. DIMEN.		EST S.Y.	NOTES
5	6" P.C.C. PAVEMENT (OPW 3500/OPW 4000)	11	x 186	227.3	North & East Side of Parking Lot Drive Lane

2024 STREET RECONSTRUCTION - DIAMOND GRINDING					
AREA NO.	TYPE	APPROX. DIMEN.		EST S.Y.	NOTES
10	Diamond Grinding	3	x 25	8.3	
11	Diamond Grinding	3	x 50	16.7	

2024 STREET RECONSTRUCTION						
AREA NO.	TYPE	APPROX. DIMEN.		EST S.F.	NOTES	
A	Curb Ramp	4.5	x 6.0	27.0	REMOVE	
	Curb Ramp	6.5	x 6.0	39.0	CONSTRUCT, ADA Plate - Cast Iron, Adjust Sprinkler	
B	Sidewalk	4.0	x 20.0	80.0	REMOVE	
	Sidewalk	5.0	x 20.0	100.0	CONSTRUCT	
C	6" Trail	10.0	x 10.0	100.0	REMOVE	
	6" Trail	10.0	x 11.0	110.0	CONSTRUCT 10' WIDE TRAIL, Adjust Manhole	
D	6" Trail	10.0	x 20.0	200.0	REMOVE & REPLACE 10' WIDE TRAIL	
E	6" Trail	10.0	x 20.0	200.0	REMOVE & REPLACE 10' WIDE TRAIL	
F	6" Trail	13.0	x 8.0	104.0	REMOVE & REPLACE VARIED WIDTH TRAIL	
G	6" Trail	6.0	x 6.0	36.0	REMOVE & REPLACE 6' WIDE TRAIL	
H	6" Trail	6.0	x 6.0	36.0	REMOVE & REPLACE 6' WIDE TRAIL	
I	6" Trail	6.0	x 6.0	36.0	REMOVE & REPLACE 6' WIDE TRAIL	
J	6" Trail	10.0	x 20.0	200.0	REMOVE & REPLACE 10' WIDE TRAIL	
K	6" Trail	18.0	x 6.0	108.0	REMOVE & REPLACE 6' WIDE TRAIL	
L	6" Trail	18.0	x 6.0	108.0	REMOVE & REPLACE 6' WIDE TRAIL	
M	6" Trail	10.0	x 20.0	200.0	REMOVE & REPLACE 10' WIDE TRAIL	
N	6" Trail	10.0	x 10.0	100.0	REMOVE & REPLACE 10' WIDE TRAIL	
O	Curb Ramp	5.0	x 5.5	27.5	REMOVE	
	Curb Ramp	5.0	x 5.5	27.5	CONSTRUCT, ADA Plate - Cast Iron	
P	Sidewalk	4.0	x 25.0	100.0	REMOVE	
	Sidewalk	5.0	x 25.0	125.0	CONSTRUCT	
Q	Imprinted Surface	5.0	x 11.3	56.3	CONSTRUCT	
R	6" Trail	6.5	x 12.5	81.3	REMOVE	
	6" Trail	5.0	x 10.0	50.0	CONSTRUCT 10' WIDE TRAIL	
S	Curb Ramp	4.0	x 16.3	65.0	REMOVE	
	Curb Ramp	5.0	x 11.0	55.0	CONSTRUCT, (2' x 8') ADA Plate - Cast Iron	
T	Curb Ramp	5.8	x 10.0	57.5	REMOVE	
	Curb Ramp	5.0	x 5.5	27.5	CONSTRUCT, ADA Plate - Cast Iron, Adjust Water Valve	
U	Sidewalk	4.0	x 16.0	64.0	REMOVE	
	Sidewalk	4.5	x 25.0	112.5	CONSTRUCT, Adjust Sprinkler	
V	6" Trail	6.0	x 6.0	36.0	REMOVE AND REPLACE 6' WIDE TRAIL, Adjust Sprinkler	



E & A CONSULTING GROUP, INC. Engineering • Planning • Environmental & Field Services <small>10809 Mill Valley Road, Suite 100 • Omaha, NE 68154 Phone: 402.265.4700 • Fax: 402.265.2559 www.eaconsult.com State of NE Certificate of Authorization #CA0008</small>	 E & A CONSULTING GROUP, INC. Engineering Answers						
CATTAL CREEK 2024 STREET RECONSTRUCTION <small>SID 466 DOUGLAS COUNTY, NEBRASKA</small>	TOTAL QUANTITIES						
Proj No: P1999/027/048 Date: 5/7/2024 Designed By: TMM Drawn By: JMB Scale: N/A Sheet: 5 of 6	Revisions <table border="1" style="width: 100%; border-collapse: collapse;"> <tr> <th style="width: 5%;">#</th> <th style="width: 15%;">Date</th> <th style="width: 80%;">Description</th> </tr> <tr> <td> </td> <td> </td> <td> </td> </tr> </table>	#	Date	Description			
#	Date	Description					

